

# Hyphos

For Tod Brody, Peter Josheff, and Ellen Ruth Rose of Earplay

John MacCallum

Alto Flute

$\text{♩} = 108$

*ppp*

6 *accel.* (pizz.) *p sub.*

11 ( $\text{♩} = 112 \text{ accel.}$ ) ( $\text{♩} = 116 \text{ accel.}$ ) *ppp sub.*

17 ( $\text{♩} = 118 \text{ accel.}$ ) *mp* *p*

23 *Bisbigl.* ( $\text{♩} = 126 \text{ accel.}$ ) *mf sub.* *poco*

30 ( $\text{♩} = 132 \text{ accel.}$ )  $\text{♩} = 138 \text{ decel.}$  *smorz.*

*mf* *mf* *mf* *mf*

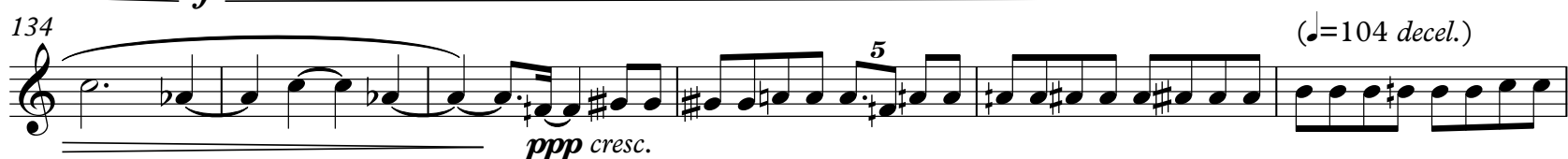
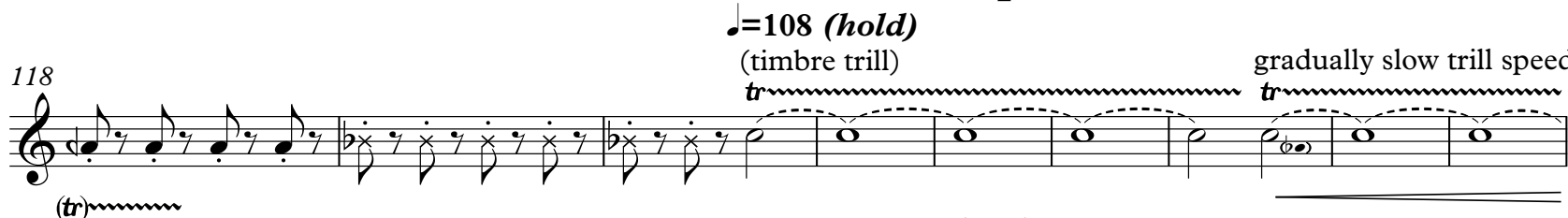
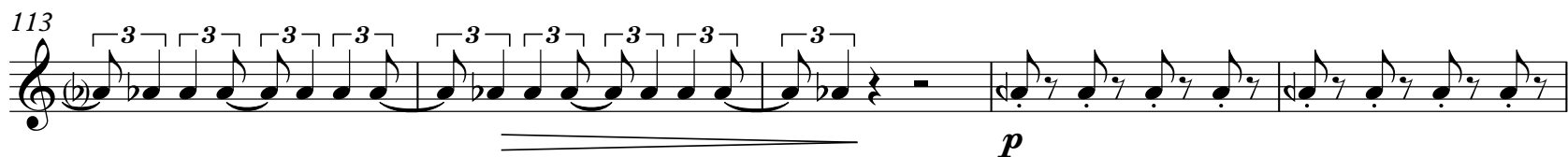
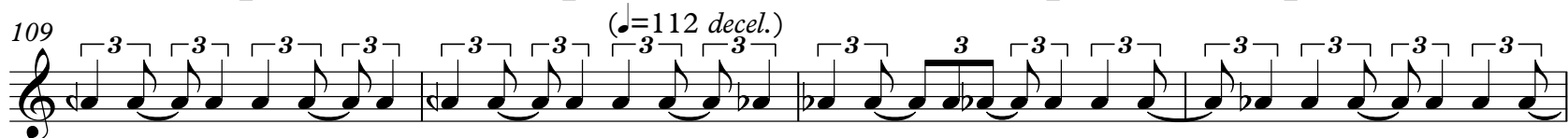
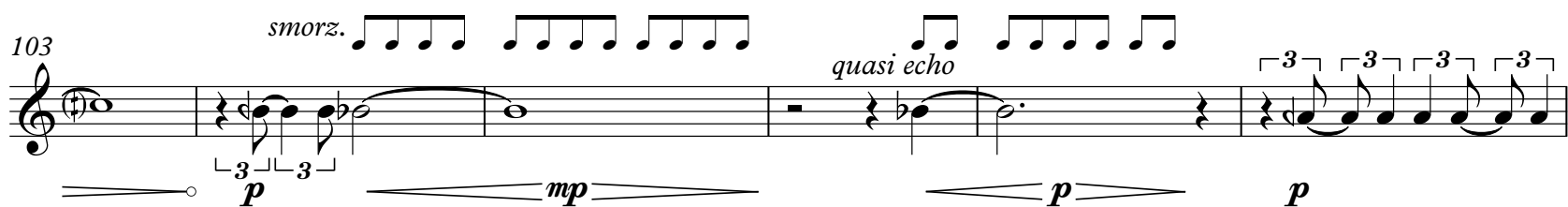
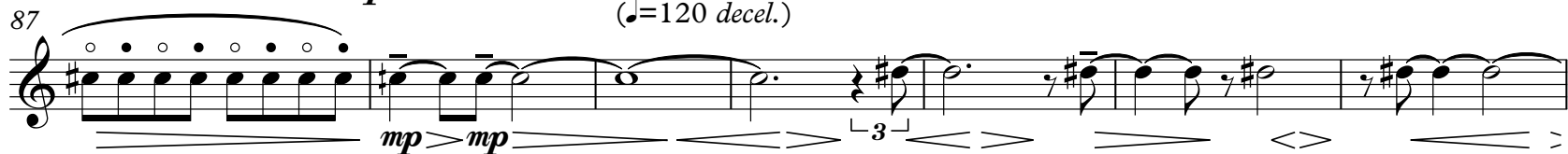
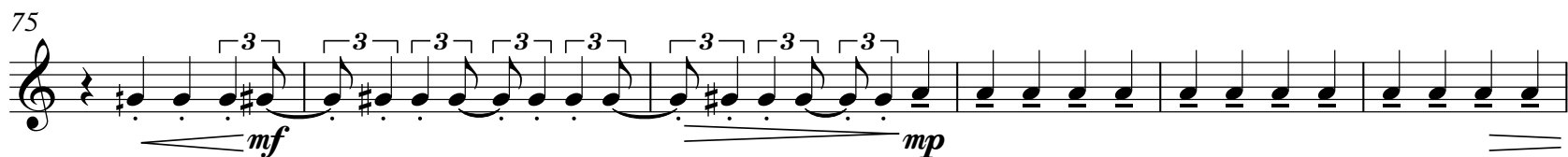
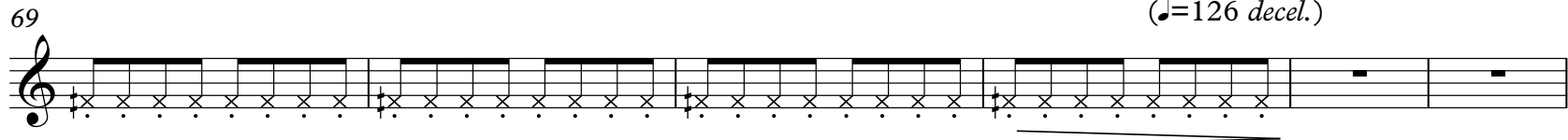
39 *mp* *mf* *mf*

47

52 ( $\text{♩} = 132 \text{ decel.}$ )

57 *mf*

63 (m3) *mp* *mp*



## Alto Flute

3

145 (♩=100 *decel.*) *mp* 5

151 (♩=96 *decel.*) 3 5

157 (♩=92 *decel.*) *decresc.* 5

162 5 3

167 ♩=88 *accel.* (♩=92 *accel.*) (♩=96 *accel.*) *ppp* *p* *p* 5 5 5

174 (♩=100 *accel.*) 3 3 5 5 3 3 3

179 (♩=104 *accel.*) (♩=108 *accel.*) 5

184 (♩=112 *accel.*) 3 3 5 3 5 5 3 5 3

189 (♩=116 *accel.*) (♩=120 *accel.*) 3 5 5 5 3 3 3

195 (♩=126 *accel.*) *p*

202 (♩=132 *accel.*) 3

207 (♩=138 *accel.*)

